



Robi®
EXCAVATOR SERIES

HYDRAULIC HAMMER EH

The Robi EH series is ideal for demolition jobs, and practically all civil engineering hammer jobs may be undertaken with this range of hammers. Bigger models are also suitable for production-based rock breaking. All models possess excellent sound suppression as standard.

Ramtec
ATTACHMENTS

www.ramtec.fi

HYDRAULIC HAMMER EH



New and updated EH-E series

With field replaceable lower tool bushing and improved greasing for both tool bushings. Increased working life, increased efficiency and lowered cost of ownership.

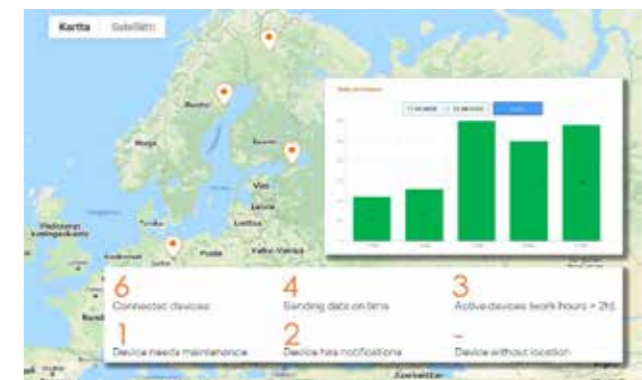
All models have a purpose built automatic lubrication system as standard, with the lubrication system ensuring longer life time for bushings and the tool shank. Proper greasing will reduce the risk of the tool failure.

Hammer hydraulics have been engineered to enable fixed impact energy. Thus every blow of the hammer is equally powerful.

EH has a slim, but robust housing that employs efficient vibration dampening. The housing protects the hammer hydraulic power cell from external impacts and the vibration damping system protects the excavator boom together with its components.

Now with optional accessory RD3 (Ramdata 3)

You get detailed information about your hammer: GPS location, operating hours, and service needs which improves even more your profitability and efficiency:



MODEL	EH100E	EH140E	EH170E	EH240E	EH300E	EH400E	EH800E
Working weight (kg)	1090	1460	1760	2400	3380	4750	6000
Impact rate (bpm)	500-940	430-790	450-750	370-630	400-560	370-530	355-645
Impact rate (bpm, long stroke)	-	-	-	460-740	520-700	450-620	300-520
Operating pressure (bar)	135-145	140-160	135-145	150-160	150-160	160-170	170-180
Min pressure relief (bar)	190	210	190	220	210	220	230
Max pressure relief (bar)	220	230	220	240	230	230	240
Oil flow range (l/min)	100-140	120-180	140-200	160-250	250-350	280-380	360-460
Tool diameter (mm)	115	125	135	142	166	190	215
Noise level 2000/14/EC (dB)	127	125	124	128	126	126	127
Carrier weight (ton)	12-20	18-26	21-30	27-40	34-60	43-80	65-120

Specifications are subject to change without notice. Product videos & info: www.ramtec.fi