

Robi[®]
COMPACT LINE

LEVELLING BUCKET LB

Robi levelling buckets have been designed for cleaning wide trenches, loading materials, slope cutting, grading and finishing work in construction, landscaping and road maintenance applications.

Ramtec
ATTACHMENTS

www.ramtec.fi

LEVELLING BUCKET LB

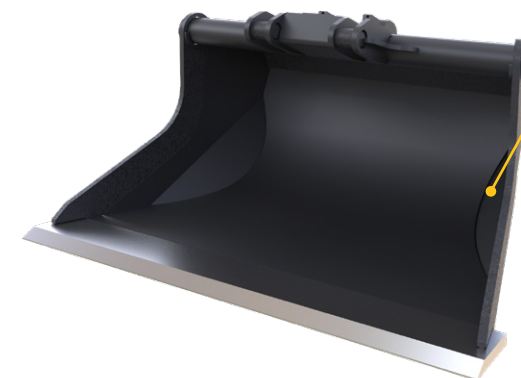


Wear resistant material.

High quality steel is utilized in all high wear components. A rigid top section assures structural stability in the wider sizes.



Bottom wear straps provide extra reinforcing.



Buckets are designed with tapered side plates to reduce wear on the buckets sides, and to allow for easier dumping.

MODEL	LB S40-190L	LB S40-250L	LB S40-350L	LB S45-350L	LB S45-400L	LB S45-500L
Adapter	S40	S40	S40	S45	S45	S45
Volume (L)	190	250	350	350	400	500
Weight (kg)	130	160	240	260	300	390
	LB S50-500L	LB S45-570L	LB S60-630L	LB S60-710L	LB S60-710L_CE	LB B20-710L_CE
Adapter	S50	S45	S60	S60	S60	B20
Volume (L)	500	570	630	710	710	710
Weight (kg)	400	430	490	420	530	560
	LB B20-870L	LB B20-1100L	LB NTP10-1100L	LB S70-1100L	LB S70-1250L	LB S80-1250L
Adapter	B20	B20	NTP10	S70	S70	S80
Volume (L)	870	1100	1100	1100	1250	1250
Weight (kg)	660	770	780	810	980	1000
	LB S70-1400L	LB S80-1400L	LB B27A-1650L	LB S80-1650L		
Adapter	S70	S80	B27	S80		
Volume (L)	1400	1400	1650	1650		
Weight (kg)	1040	1050	1200	1270		

Check carrier's lifting capacity from carrier manufacturer