



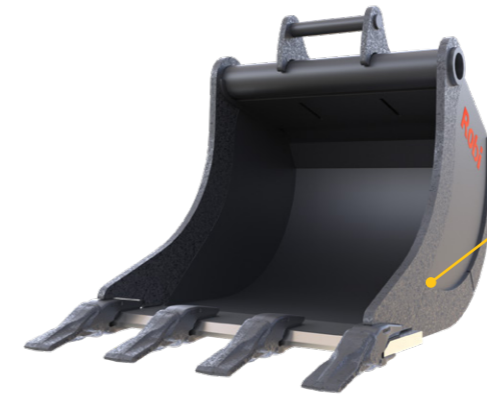
**Robi**®  
COMPACT LINE

## DIGGING BUCKET DB

Robi digging buckets have been designed for light and heavy construction site work as well as for use in more demanding excavating conditions. Typical applications are utility trenching and general excavating in soft and moderate ground.

**Ramtec**  
ATTACHMENTS

# DIGGING BUCKET DB



### Wear resistant material.

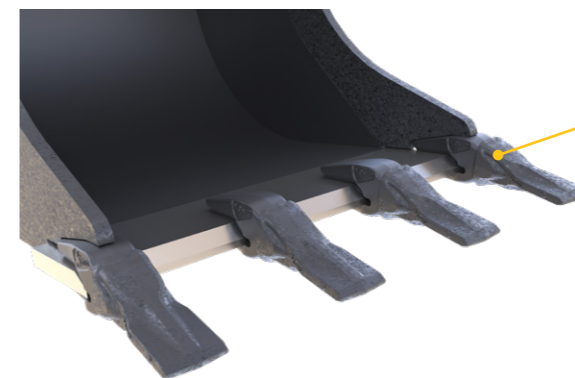
High quality steel is utilized in all high wear components. A rigid top section assures structural stability.

Buckets are designed with tapered side plates to reduce wear on the buckets sides, and to allow for easier dumping. Deep profile for high capacity.



Bottom wear straps provide extra reinforcing.

Overlapping plate reduces stresses in critical areas.



Wear parts easily changeable.

|                    |                |                |              |              |              |              |
|--------------------|----------------|----------------|--------------|--------------|--------------|--------------|
| <b>MODEL</b>       | DB S30-150-55L | DB S30-180-55L | DB S40-190L  | DB S40-230L  | DB S45-300L  | DB S45-350L  |
| <b>Adapter</b>     | S30            | S30            | S40          | S40          | S45          | S45          |
| <b>Volume (L)</b>  | 55             | 55             | 190          | 230          | 300          | 350          |
| <b>Weight (kg)</b> | 60             | 60             | 140          | 170          | 320          | 350          |
|                    | DB S45-420L    | DB S60-550L    | DB S60-625L  | DB S60-700L  | DB B20-850   | DB B20-1050L |
| <b>Adapter</b>     | S45            | S60            | S60          | S60          | B20          | B20          |
| <b>Volume (L)</b>  | 420            | 550            | 625          | 700          | 850          | 1050         |
| <b>Weight (kg)</b> | 400            | 510            | 590          | 620          | 840          | 930          |
|                    | DB B20-1150L   | DB S70-1150L   | DB S70-1250L | DB S80-1250L | DB S80-1350L | DB S80-1450L |
| <b>Adapter</b>     | B20            | S70            | S70          | S80          | S80          | S80          |
| <b>Volume (L)</b>  | 1150           | 1150           | 1250         | 1250         | 1350         | 1450         |
| <b>Weight (kg)</b> | 1010           | 1060           | 1220         | 1250         | 1390         | 1460         |