

**Robi**®  
**COMPACT LINE**

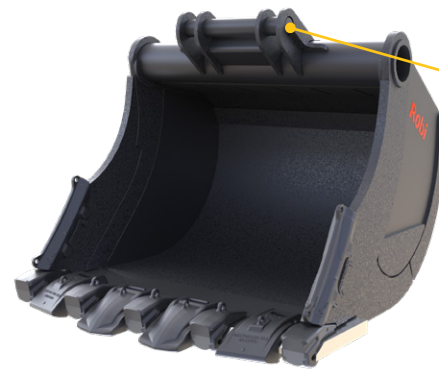
## BIG DIGGING BUCKET **DB**

Robi digging buckets are designed for heavy construction in demanding conditions. They are sturdy, economical buckets that provide increased production with less maintenance and downtime. For heavy duty jobs.

**Ramtec**  
**ATTACHMENTS**

[www.ramtec.fi](http://www.ramtec.fi)

## BIG DIGGING BUCKET **DB**



### Wear resistant material.

High quality steel is utilized in all high wear components. A rigid top section assures structural stability.

Buckets are designed with tapered side plates to reduce wear on the buckets sides, and to allow for easier dumping.

Deep profile for high capacity.  
Overlapping plate reduces stresses in critical areas.

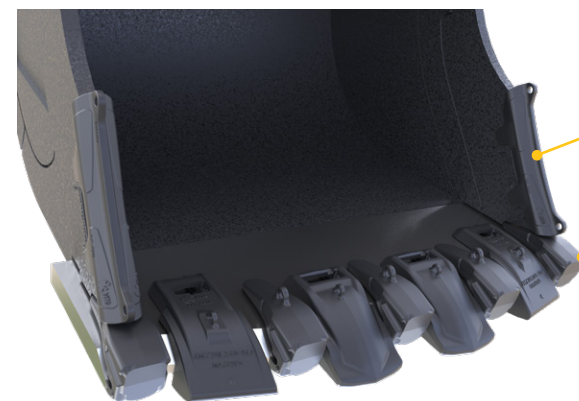


Bottom wear straps using 400 HB to increase wear resistance.

Extra high side plate give higher strength and wear resistance in high wear areas.

Cutting edge using 500 HB for increased strength reinforcements in critical areas for maximum durability.

Heavy-duty torque tube delivers maximum strength and eliminates corner cracks and top beam failures.



### Wear parts easily replaceable.



MODEL	DB S30-2200L	DB S90-2500L
Adapter	S30	S90
Volume (L)	2200	2500
Weight (kg)	2603	2747

*Check carrier's lifting capacity from carrier manufacturer*